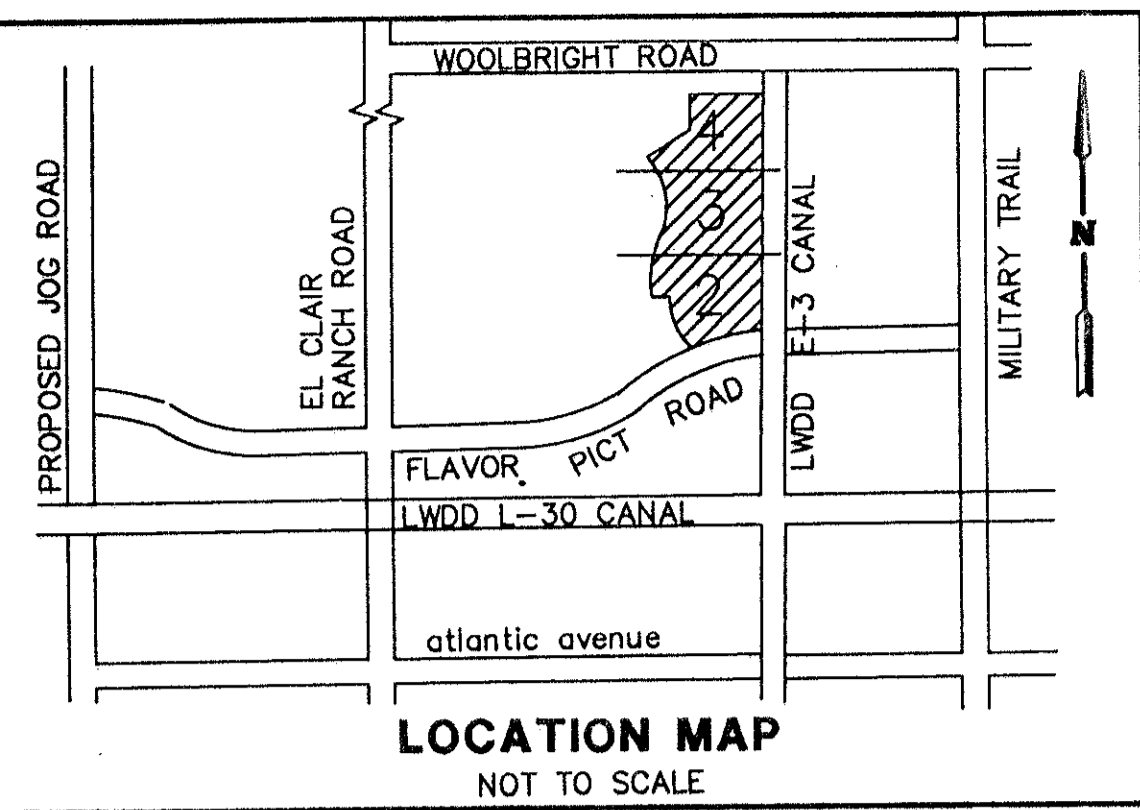


# CORAL LAKES VII, A P.U.D.

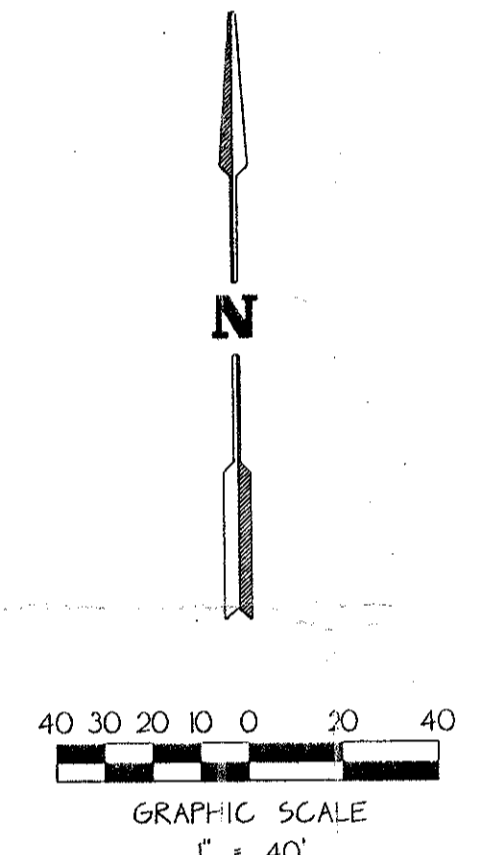
A REPLAT OF A PORTION OF TRACT B AND ALL OF TRACT F OF THE PLAT OF CORAL LAKES, AS RECORDED IN PLAT BOOK 67, PAGES 197 THROUGH 198 INCLUSIVE OF THE PUBLIC RECORDS OF PALM BEACH COUNTY FLORIDA ALL IN SECTION 2, TOWNSHIP 46 SOUTH, RANGE 42 EAST, PALM BEACH COUNTY, FLORIDA

THIS INSTRUMENT PREPARED BY JAMES E. PARK, P.L.S. WILLIAMS, HATFIELD & STONER, INC. - ENGINEERS PLANNERS SURVEYORS 1901 SOUTH CONGRESS AVENUE, SUITE 150, BOYNTON BEACH, FLORIDA 33426

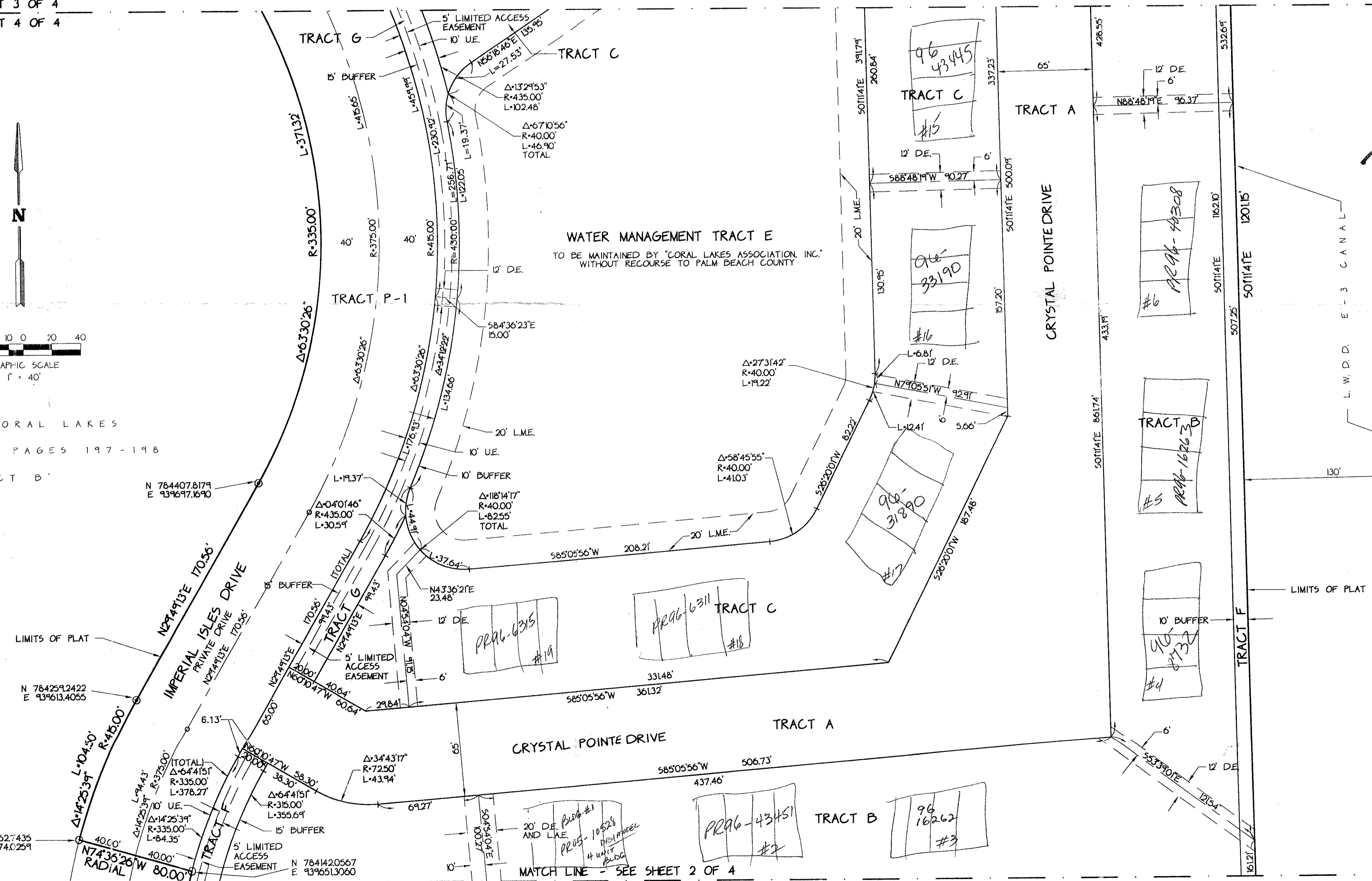
SHEET 3 OF 4



MATCH LINE - SEE SHEET 3 OF 4  
MATCH LINE - SEE SHEET 4 OF 4



PLAT OF CORAL LAKES  
PLAT BOOK 67, PAGES 197-198



PET. 614-013  
 ALLOC. #0001 (all used)  
 (5/3/3/K  
 + NO SCHOOLS  
 PER V. BAKER MEMO

Vicel Del Rey PUD  
 Coral Lakes  
 Parcel 10

T12-456

SUBDIVISION Coral Lakes VIII  
 BOOK 76 PAGE 83  
 FLOOD MAP #205B  
 ZONING AR  
 QUAD # 36  
 SE  
 PUD NAME Same.

# CORAL LAKES VIII A PUD

0614-011

76/83